

cavalier  
homes®  
REAL HOMES... REAL PEOPLE.



# Hazelwood Series

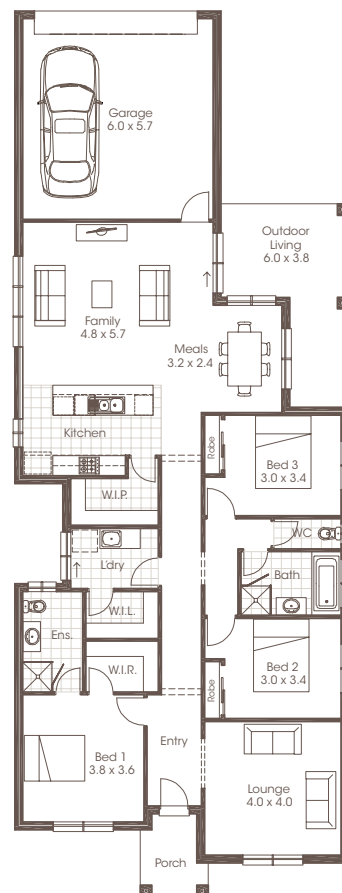
[www.cavalierhomes.com.au](http://www.cavalierhomes.com.au)



# HAZELWOOD 24A

 | 3
  | 2
  | 2

3 Bedrooms	Living	167.73m <sup>2</sup>
2 Bathrooms	Garage	38.50m <sup>2</sup>
Double Garage	Porch	4.33m <sup>2</sup>
Lounge	Outdoor Living	16.58m <sup>2</sup>
Family	Total	227.14m <sup>2</sup>
Meals	Width	10.01m
Kitchen	Depth	26.50m
Laundry		
Outdoor Living		



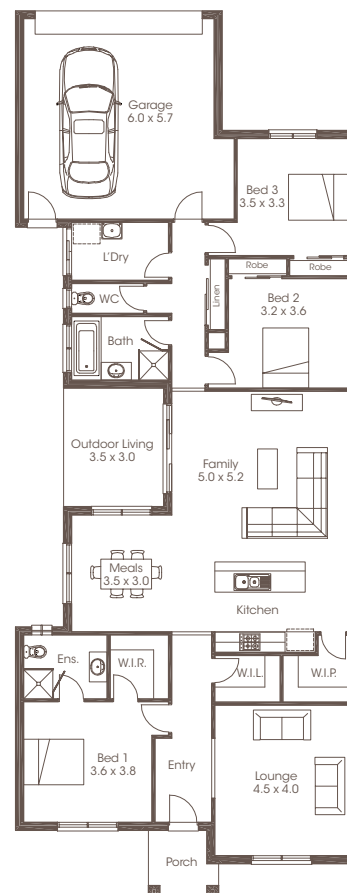
Room sizes shown are approximate only, please refer to final working drawings for actual sizes. Each office is independently owned and operated. Plans are protected by copyright. Prices, inclusions and plans are subject to variation without notice. Display/show home designs and inclusions vary throughout Australia and New Zealand and are provided as a guide only. Please refer to your building contract for the specific design and inclusion details of your new home. Images provided may not be specific to that house type, they are for illustrative purposes only.



## HAZELWOOD 24B

 | 3
  | 2
  | 2

3 Bedrooms	Living	172.36m <sup>2</sup>
2 Bathrooms	Garage	39.80m <sup>2</sup>
Double Garage	Porch	3.85m <sup>2</sup>
Lounge	Outdoor Living	10.61m <sup>2</sup>
Family	Total	226.62m <sup>2</sup>
Meals	Width	10.20m
Kitchen	Depth	26.50m
Laundry		
Outdoor Living		





## FACADE OPTIONS

Cleverly designed to suit the modern sized block with laneway access, the Hazelwood provides a family home without compromising space. Featuring a choice of smart facades reflecting current trends, this is a home that will provide street appeal. With a large living area, double garage and a great outdoor entertaining area, it ticks all the boxes.



Modern Federation



Modern Hamptons



Urban

Plans are copyright. Prices, inclusions and plans are subject to variation without notice and vary throughout Australasia. Display and show home designs and inclusions vary throughout Australasia and are provided as a guide only. Please refer to your building contract for the specific design and inclusion details of your new home. Unless otherwise stated in writing retail new home prices do not include furniture, decorator items, driveways, paths, landscaping, swimming pools, light fittings, window and floor coverings (except tiles to WCs, bathrooms and laundries), letterboxes, fencing, security, vacuum systems, telephone, intercom and communication systems and air conditioning. Photographs shown in this brochure are indicative only to depict the style of Cavalier designs and may not be of this series design. Width and depth dimensions shown to floor plans are measured to external brick work and do not include eaves. Eaves are not included as standard. Additional costs apply.

Cavalier Homes Registered Builders in Albury-Wodonga CDB-U 48509 (VIC) 184744C (NSW), Bendigo CDB-U 50034, Central West 342075C (NSW), Geelong CDB-U 58723 (VIC), Goldfields CDB-U 58723, Gold Coast QBC 1311187 (QLD), Goulburn Valley CDB-U 51879 (VIC) 316535C (NSW), Greater New Castle 334818C (NSW), Greater Western Sydney 332118C, Illawarra 343899C (NSW), Melbourne West CDB-M 49760, North Hobart 191512508 (TAS), Southern Highlands 249694C (NSW) Warreroo 102383 (WA).