

cavalier
homes®
REAL HOMES... REAL PEOPLE.



Manly Series

www.cavalierhomes.com.au



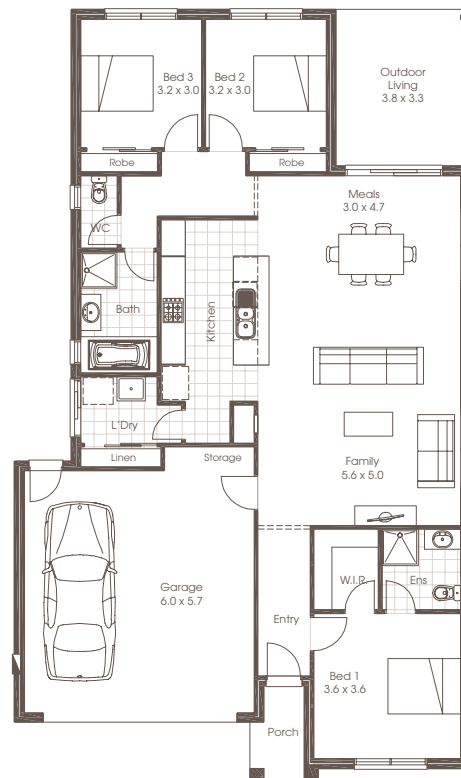
Award winning buildings and designs to suit you.



MANLY 20

 | 3
  | 2
  | 2

3 Bedrooms	Living	136.06m ²
2 Bathrooms	Garage	38.86m ²
Double Garage	Porch	2.92m ²
Family	Outdoor Living	12.92m ²
Meals	Total	190.76m ²
Kitchen		
Laundry	Width	11.30m
Outdoor Living	Depth	19.16m

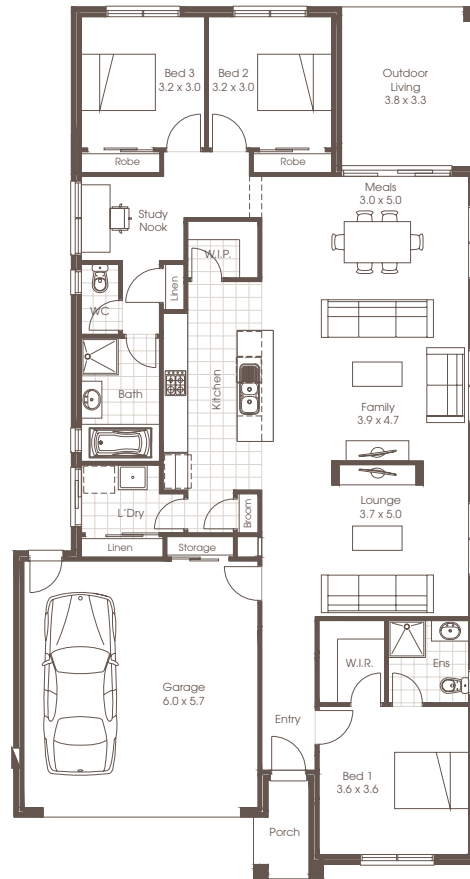


Room sizes shown are approximate only, please refer to final working drawings for actual sizes. Each office is independently owned and operated. Plans are protected by copyright. Prices, inclusions and plans are subject to variation without notice. Display/show home designs and inclusions vary throughout Australia and New Zealand and are provided as a guide only. Please refer to your building contract for the specific design and inclusion details of your new home. Images provided may not be specific to that house type, they are for illustrative purposes only.

MANLY 22



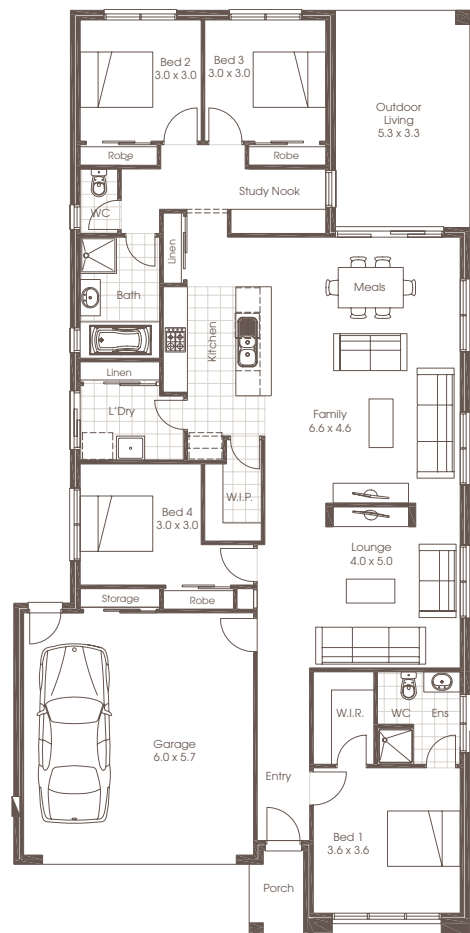
3 Bedrooms	Living	157.57m ²
2 Bathrooms	Garage	37.55m ²
Double Garage	Porch	2.92m ²
Study Nook	Outdoor Living	12.92m ²
Lounge	Total	210.96m ²
Family		
Meals	Width	11.30m
Kitchen	Depth	21.20m
Laundry		
Outdoor Living		



MANLY 24



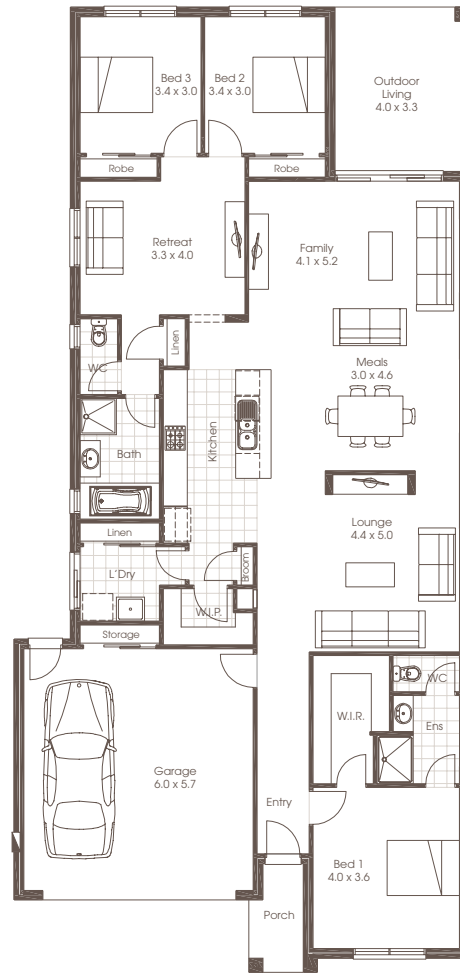
4 Bedrooms	Living	169.32m ²
2 Bathrooms	Garage	37.42m ²
Double Garage	Porch	2.78m ²
Study Nook	Outdoor Living	17.91m ²
Lounge	Total	227.43m ²
Family		
Meals	Width	11.30m
Kitchen	Depth	22.96m
Laundry		
Outdoor Living		



MANLY 25



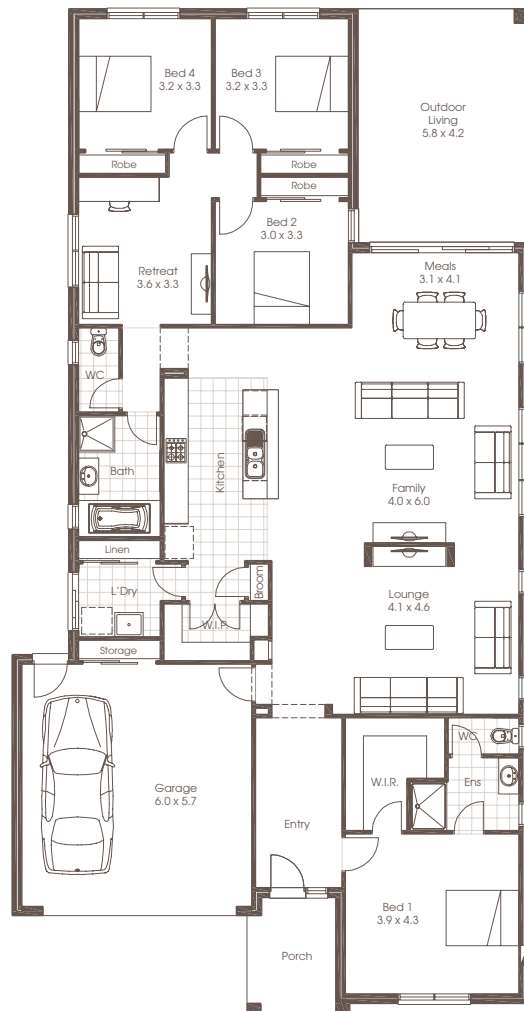
3 Bedrooms	Living	182.39m ²
2 Bathrooms	Garage	37.55m ²
Double Garage	Porch	3.33m ²
Lounge	Outdoor Living	13.58m ²
Retreat	Total	236.85m ²
Family	Width	11.30m
Meals	Depth	23.95m
Kitchen		
Laundry		
Outdoor Living		



MANLY 30



4 Bedrooms	Living	211.60m ²
2 Bathrooms	Garage	38.70m ²
Double Garage	Porch	6.30m ²
Lounge	Outdoor Living	24.50m ²
Retreat	Total	281.10m ²
Family	Width	12.80m
Meals	Depth	25.00m
Kitchen		
Laundry		
Outdoor Living		

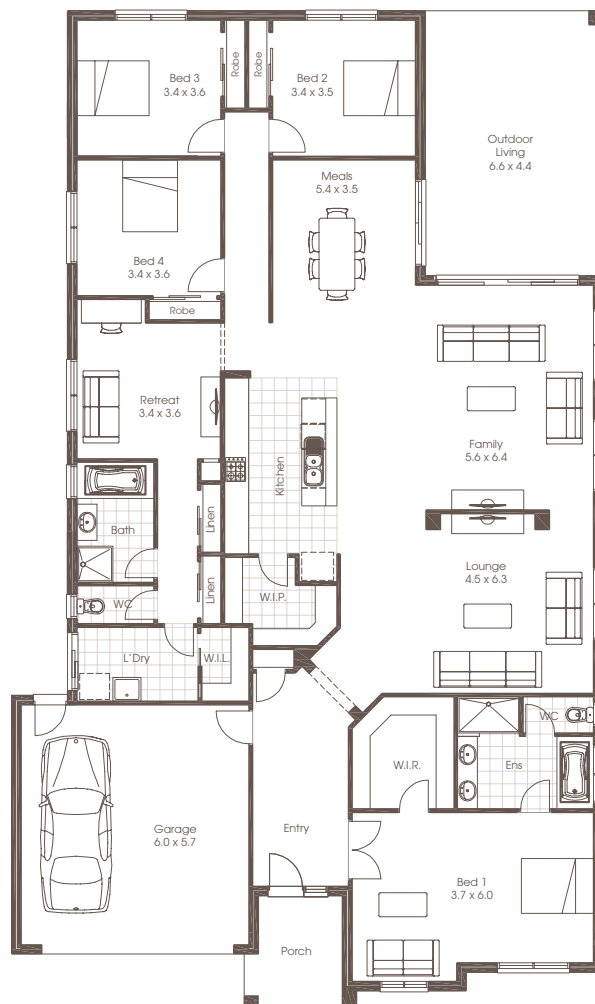




MANLY 36

 | 4
  | 2
  | 2

4 Bedrooms	Living	259.60m ²
2 Bathrooms	Garage	37.70m ²
Double Garage	Porch	6.40m ²
Lounge	Outdoor Living	29.50m ²
Retreat	Total	333.20m ²
Family		
Meals	Width	14.80m
Kitchen	Depth	25.00m
Laundry		
Outdoor Living		





Designed with the growing family in mind, every square metre of the Manly is devoted to family living. With a well appointed Family Zone that opens out onto a large Outdoor Living area for easy entertaining with friends, the home is designed for hosting and relaxed living while still allowing seclusion for the things that are just for you. A private kids zone or study area and a choice of three or four bedrooms will allow ample space for you, your family and friends to enjoy every inch of this beautiful home.

FACADE OPTIONS



Plans are copyright. Prices, inclusions and plans are subject to variation without notice and vary throughout Australasia. Display and show home designs and inclusions vary throughout Australasia and are provided as a guide only. Please refer to your building contract for the specific design and inclusion details of your new home. Unless otherwise stated in writing retail new home prices do not include furniture, decorator items, driveways, paths, landscaping, swimming pools, light fittings, window and floor coverings (except tiles to WCs, bathrooms and laundries), letterboxes, fencing, security, vacuum systems, telephone, intercom and communication systems and air conditioning. Photographs shown in this brochure are indicative only to depict the style of Cavalier designs and may not be of this series design. Width and depth dimensions shown to floor plans are measured to external brick work and do not include eaves. Eaves are not included as standard. Additional costs apply.

Cavalier Homes Registered Builders in Albury-Wodonga CDB-U 48509 (VIC) 184744C (NSW), Bendigo CDB-U 50034, Greater Western Sydney 332118C, Goulburn Valley CDB-U 51879 (VIC) 316535C (NSW), Goldfields CDB-U 58723, Melbourne West CDB-M 49760, North Coast 209455C, Wagga Wagga 196616C.