

cavalier
homes®
REAL HOMES... REAL PEOPLE.



Duneed Series

www.cavalierhomes.com.au



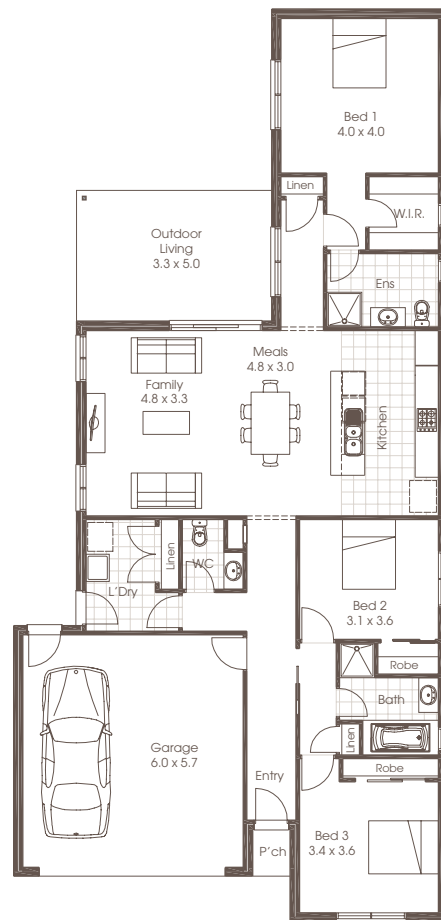


Award winning buildings and designs to suit you.

DUNED 22

 | 3
  | 2
  | 2

3 Bedrooms	Living	150.81m ²
2 Bathrooms	Garage	37.74m ²
Double Garage	Front Porch	1.17m ²
Family	Outdoor Living	17.03m ²
Meals	Total	206.75m ²
Kitchen		
Laundry	Width	11.50m
Outdoor Living	Depth	23.61m



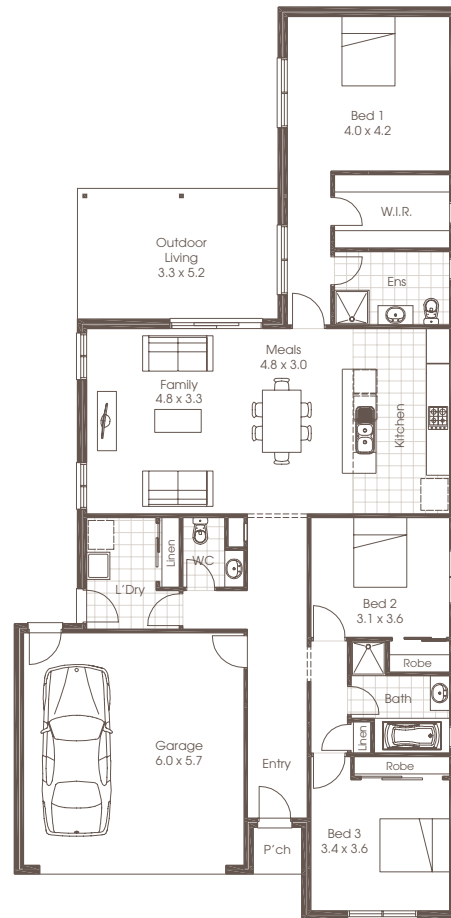
Room sizes shown are approximate only, please refer to final working drawings for actual sizes. Each office is independently owned and operated. Plans are protected by copyright. Prices, inclusions and plans are subject to variation without notice. Display/show home designs and inclusions vary throughout Australia and New Zealand and are provided as a guide only. Please refer to your building contract for the specific design and inclusion details of your new home. Images provided may not be specific to that house type, they are for illustrative purposes only.



DUNED 23

 | 3
  | 2
  | 2

3 Bedrooms	Living	155.54m ²
2 Bathrooms	Garage	37.74m ²
Double Garage	Front Porch	1.51m ²
Family	Outdoor Living	17.54m ²
Meals	Total	212.33m ²
Kitchen		
Laundry	Width	11.50m
Outdoor Living	Depth	23.61m

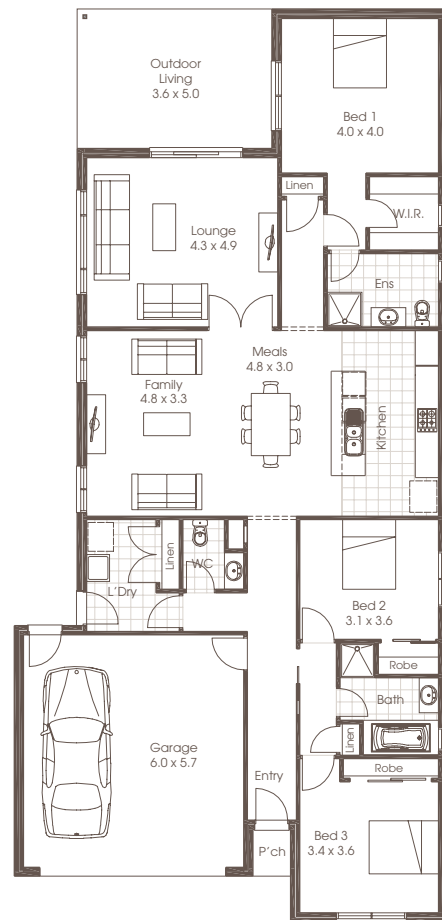




DUNED 24

 | 3
  | 2
  | 2

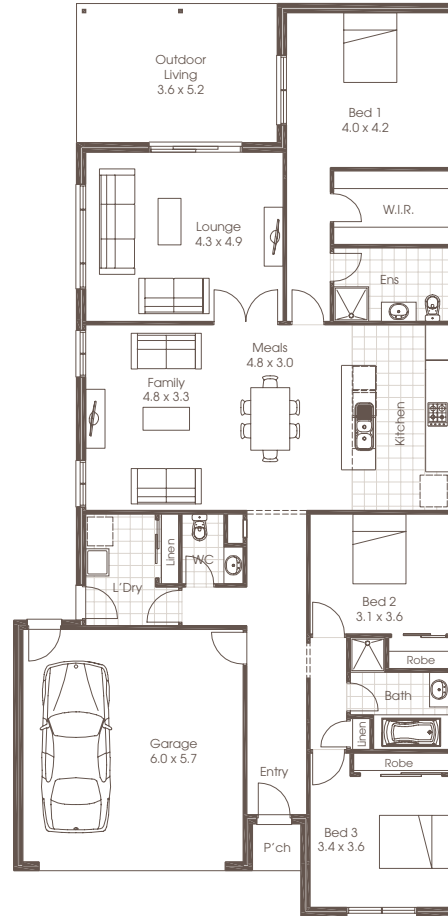
3 Bedrooms	Living	173.34m ²
2 Bathrooms	Garage	37.74m ²
Double Garage	Front Porch	1.17m ²
Lounge	Outdoor Living	18.14m ²
Family	Total	230.39m ²
Meals		
Kitchen	Width	11.50m
Laundry	Depth	23.61m
Outdoor Living		



DUNED 25



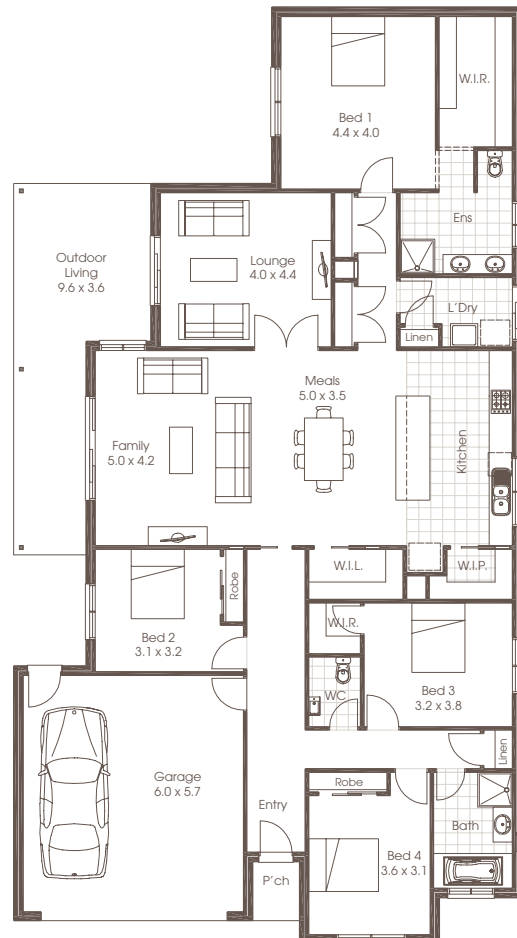
3 Bedrooms	Living	178.74m ²
2 Bathrooms	Garage	37.74m ²
Double Garage	Front Porch	1.51m ²
Lounge	Outdoor Living	18.68m ²
Family	Total	236.67m ²
Meals		
Kitchen	Width	11.50m
Laundry	Depth	23.61m
Outdoor Living		



DUNED 30



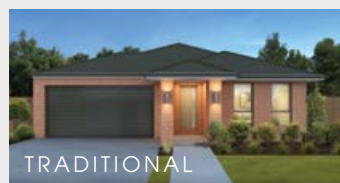
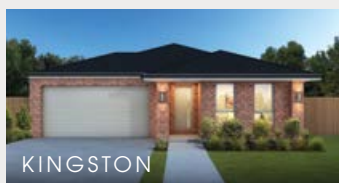
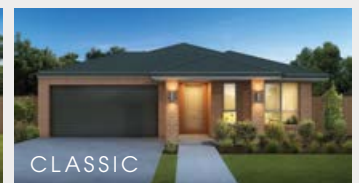
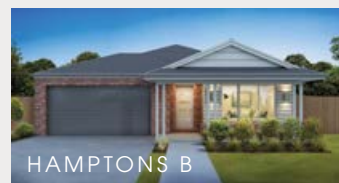
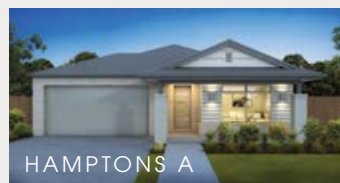
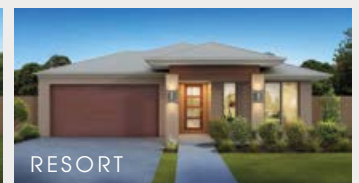
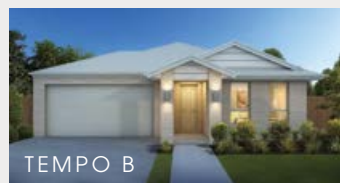
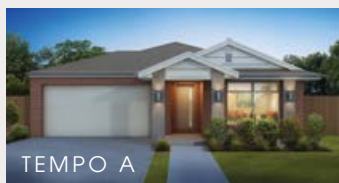
4 Bedrooms	Living	210.40m ²
2 Bathrooms	Garage	38.53m ²
Double Garage	Front Porch	1.85m ²
Lounge	Outdoor Living	24.82m ²
Family	Total	275.59m ²
Meals		
Kitchen	Width	13.14m
Laundry	Depth	24.23m
Outdoor Living		





Designed to maximise the restrictions of a narrow block of land, the Duneed features an impressive open-plan kitchen, meals and living area that provides breathing space and that connects you to the sizable and welcoming outdoor living area. A secluded master bedroom is positioned away from the entrance and gives you the privacy you've been looking for.

FACADE OPTIONS



Plans are copyright. Prices, inclusions and plans are subject to variation without notice and vary throughout Australasia. Display and show home designs and inclusions vary throughout Australasia and are provided as a guide only. Please refer to your building contract for the specific design and inclusion details of your new home. Unless otherwise stated in writing retail new home prices do not include furniture, decorator items, driveways, paths, landscaping, swimming pools, light fittings, window and floor coverings (except tiles to WCs, bathrooms and laundries), letterboxes, fencing, security, vacuum systems, telephone, intercom and communication systems and air conditioning. Photographs shown in this brochure are indicative only to depict the style of Cavalier designs and may not be of this series design. Width and depth dimensions shown to floor plans are measured to external brick work and do not include eaves. Eaves are not included as standard. Additional costs apply.

Cavalier Homes Registered Builders in Albury-Wodonga CDB-U 48509 (VIC) 184744C (NSW), Bendigo CDB-U 50034, Greater Western Sydney 332118C, Goulburn Valley CDB-U 51879 (VIC) 316535C (NSW), Goldfields CDB-U 58723, Melbourne West CDB-M 49760, North Coast 209455C, Wagga Wagga 196616C.