

cavalier  
homes<sup>®</sup>  
REAL HOMES... REAL PEOPLE.



# Inglewood Series

[www.cavallerhomes.com.au](http://www.cavallerhomes.com.au)

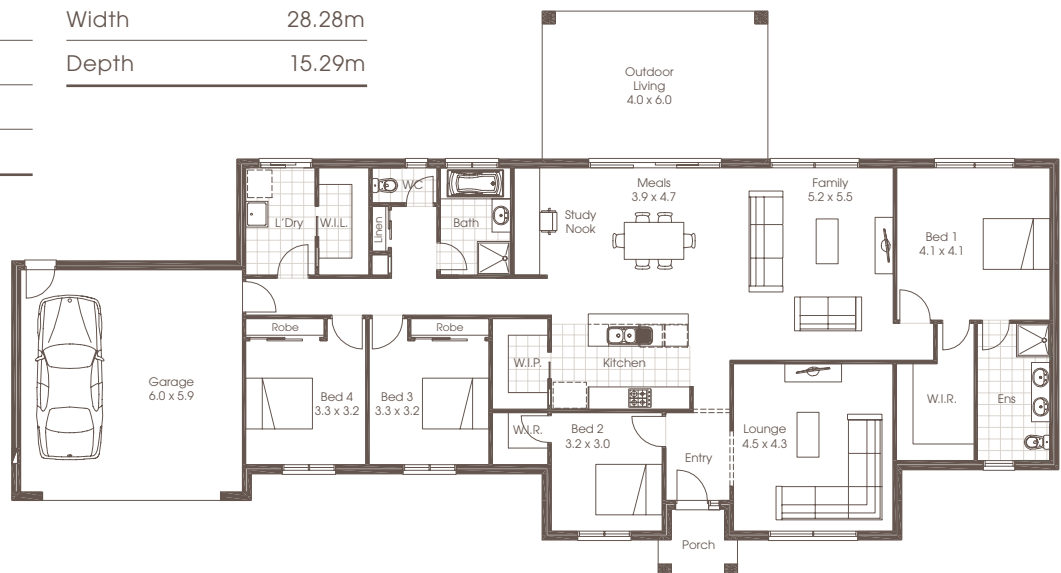
# Award winning buildings and designs to suit you.



## INGLEWOOD 29

 | 4
  | 2
  | 2

4 Bedrooms	Living	203.55m <sup>2</sup>
2 Bathrooms	Garage	40.48m <sup>2</sup>
Double Garage	Porch	3.33m <sup>2</sup>
Study Nook	Outdoor Living	24.36m <sup>2</sup>
Lounge	Total	271.72m <sup>2</sup>
Family		
Meals	Width	28.28m
Kitchen	Depth	15.29m
Laundry		
Outdoor Living		



Room sizes shown are approximate only, please refer to final working drawings for actual sizes. Each office is independently owned and operated. Plans are protected by copyright. Prices, inclusions and plans are subject to variation without notice. Display/show home designs and inclusions vary throughout Australia and New Zealand and are provided as a guide only. Please refer to your building contract for the specific design and inclusion details of your new home. Images provided may not be specific to that house type, they are for illustrative purposes only.



# INGLEWOOD 31

 | 4
  | 2
  | 2

4 Bedrooms	Living	215.52m <sup>2</sup>
2 Bathrooms	Garage	39.91m <sup>2</sup>
Double Garage	Porch	3.33m <sup>2</sup>
Study	Outdoor Living	32.53m <sup>2</sup>
Lounge	Total	291.29m <sup>2</sup>
Family		
Meals	Width	28.38m
Kitchen	Depth	15.29m
Laundry		
Outdoor Living		



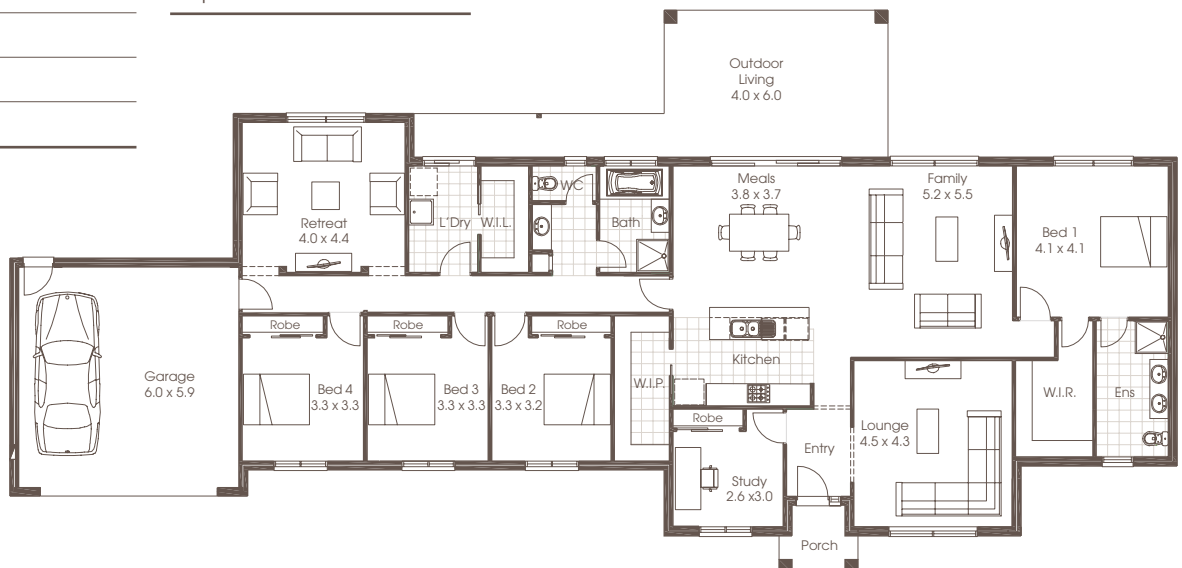




## INGLEWOOD 34

 | 4
  | 2
  | 2

4 Bedrooms	Living	238.80m <sup>2</sup>
2 Bathrooms	Garage	40.48m <sup>2</sup>
Double Garage	Porch	3.33m <sup>2</sup>
Study	Outdoor Living	32.40m <sup>2</sup>
Retreat	Total	314.90m <sup>2</sup>
Lounge		
Family	Width	31.74m
Meals	Depth	15.29m
Kitchen		
Laundry		
Outdoor Living		





## INGLEWOOD 39

 | 4
  | 2
  | 2

4 Bedrooms	Living	244.71m <sup>2</sup>
2 Bathrooms	Garage	40.48m <sup>2</sup>
Double Garage	Porch	7.70m <sup>2</sup>
Study	Outdoor Living	30.02m <sup>2</sup>
Retreat	Total	363.81m <sup>2</sup>
Lounge		
Family	Width	31.90m
Meals	Depth	16.22m
Kitchen		
Laundry		
Outdoor Living		





## FACADE OPTIONS

The Inglewood is our new single storey home with a twist. Wider than it is long, it makes perfect sense for a corner allotment, allowing you to create a sense of presence towards the secondary frontage. It also looks equally as magnificent stretched across an acreage taking in the wide open spaces. This is a cleverly designed home with four bedrooms, a study and with the master bedroom away from the kids bedrooms for added privacy. Open plan family, formal entry and living strikes the perfect balance between class and liveability.



Standard



Homestead



Homestead Bellcast

Plans are copyright. Prices, inclusions and plans are subject to variation without notice and vary throughout Australasia. Display and show home designs and inclusions vary throughout Australasia and are provided as a guide only. Please refer to your building contract for the specific design and inclusion details of your new home. Unless otherwise stated in writing retail new home prices do not include furniture, decorator items, driveways, paths, landscaping, swimming pools, light fittings, window and floor coverings (except tiles to WCs, bathrooms and laundries), letterboxes, fencing, security, vacuum systems, telephone, intercom and communication systems and air conditioning. Photographs shown in this brochure are indicative only to depict the style of Cavalier designs and may not be of this series design. Width and depth dimensions shown to floor plans are measured to external brick work and do not include eaves. Eaves are not included as standard. Additional costs apply.

Cavalier Homes Registered Builders in Albury-Wodonga CDB-U 48509 (VIC) 184744C (NSW), Bendigo CDB-U 50034, Greater Western Sydney 332118C, Goulburn Valley CDB-U 51879 (VIC) 316535C (NSW), Goldfields CDB-U 58723, Melbourne West CDB-M 49760, North Coast 209455C, Wagga Wagga 196616C.